

Date: **November 10, 2023**

Owner: **Victor Elementary School District**
143 E. First Street
Perris, CA 90720

Architect: **Westgroup Designs**
19900 MacArthur Blvd., Suite 1000
Irvine, CA 92612

Project: HVAC replacement project, Group 1

The clarifications, modifications, changes, additions, and/or deletions contained herein shall be incorporated within the bid documents for the project. Such information shall take precedence over that previously published.

BID ADDENDUM 2

Please be informed of the following Bid Addendum items:

GENERAL

1. PRE-BID RFI RESPONSES

See 'Exhibit B' attached.

Sixth Street Prep STREAM
DSA Application # 04-122084

DRAWINGS – NARRATIVE

Mechanical

1. **M0-1.1 – Mechanical Schedules**
 - a. Heat Pump Schedules (Wall Mounted) – revised HP-K1 model number. HP-R1 model number remains the same.
 - b. Comparison Schedules – revised HP-K1 model number. HP-R1 model number remains the same.

Discovery Elementary School
DSA Application # 04-122081

DRAWINGS – NARRATIVE

Mechanical

1. **M0-1.2 – Mechanical Schedules**
 - a. Comparison Schedule – revised sound curb weight and total weight.
 - b. Air Conditioner Schedule (wall mounted) – revised sound curb model number. Revised operating weight. Added remark No. 6.
2. **MD2-1.5 – Mechanical Demolition Floor Plan – Relocatables**
 - a. Added existing top supply air duct for clarification.
 - b. Revised Demolition Note No. 1.
3. **M2-1.5 – Mechanical Renovation Floor Plan - Relocatables**
 - a. Added 'graphic' of existing exposed supply air duct at top of unit.
 - b. Revised Plan Note No. 1 to clarify reconnection to top of unit air supply.

END

Sincerely,



Michael Cecconi, LEED AP | Senior Associate, Project Architect

ATTACHMENTS:

- DISCOVERY_DWGS_230109
(revised Mechanical sheets as noted above)
- SIXTH STREET_DWGS_230109
(revised Mechanical sheets as noted above)
- EXHIBIT B_231109
(Exhibit 'B', dated 11.9.2023)



BID # 23-002

HVAC IMPROVEMENTS GROUP 1 – 4 SITES
VICTOR ELEMENTARY SCHOOL DISTRICT
VICTORVILLE, CA

November 10th, 2023

EXHIBIT B - ADDENDUM – 02

SPECIFICATIONS

ITEM NO. 1 PROJECT MANUAL, SPECIFICATION SECTION- 001116 NOTICE INVITING BIDS

A. The bid deadline remains 02:00:00 o'clock PM. on the **17th day of November 2023**. The location for receipt of Bids remains the District Office for Victor Elementary School District, located at 12219 2nd Ave., Victorville, CA 92395.

REQUESTS FOR CLARIFICATIONS

ITEM NO. 2 Question: At Brentwood and Discovery, there are wall mounted units with exterior tile on the exterior surface. Please provide clarification on which Bid package is responsible for the demolition and replacement of the existing tile.

Response: All Bidders

Bid package-02 – General shall remove and replace existing 8 inch exterior tile with close/similar tile and shall coordinate extent of removal with Bid Package 1 – HVAC.

ITEM NO. 3 Question: At Brentwood and Del Rey, there are existing cages surrounding the wall mounted units. Please provide clarification on the scope of work regarding the removal and replacement of these cages.

Response: BP-02 General

Bid Package-02 contractor shall remove existing cages prior to wall units being swapped and properly dispose of cages. New units will not require cages and BP-02 shall patch any penetrations from existing cages as necessary. BP-02 to coordinate with BP-01 regarding schedule.

ITEM NO. 4 Question: At Sixth St Prep, during the job walk, units in the basement and attic at the Admin/Library Building were reviewed. Units are not shown on current drawings and are not listed on Mechanical schedule. Please confirm if the units are included in this project scope of work.

Response: All Bidders

Admin/Library Building is not included in this project scope of work as noted on the existing overall site plan (sheet E0-1.1).



- ITEM NO. 5 Question: At all sites, please provide clarification on the mounting height for all new thermostats.
- Response: BP-01 HVAC
- Bid Package-01 contractor shall install all thermostats per Thermostat Mounting Height Detail shown on M0-1.0.
- ITEM NO. 6 Question: At Sixth St Prep, during the job-walk, there was a wall mounted unit observed at the Kindergarten Building that is not referenced on the mechanical plans. Please provide clarification/direction on how to proceed with this unit.
- Response: All Bidders
- Bidders to reference Demolition Note 3 on sheet MD2-1.2 regarding existing unit in question. Bid Package-01 Contractor shall properly remove and dispose of unit and Bid Package-02 Contractor shall patch back wall penetration to match existing condition.
- ITEM NO. 7 Question: At Brentwood, there are 2 new CMU walls at Building 300 and Building 500 where the existing CMU wall has a stucco finish. Please provide details for finish side of stucco wall.
- Response: BP-02 General
- Bid Package-02 Contractor shall apply stucco finish at the new exterior wall per Specification Section 09 24 00 to match existing finish.
- ITEM NO. 8 Question: The Project manual states to have contractor for Bid Package 1 - HVAC provide temporary fencing and gates for own work. Please clarify the need for the HVAC contractor to set up fencing with the General Contractor having the same requirement. The General Contractor is normally the lead for access control to the site.
- Response: All Bidders
- Each Bid Package Contractor shall provide temporary fencing for their own scope of work as needed. Temporary Fencing shall be required for Bid Package-01 on site per Site Logistics Plans included in Project Manual Vol. 1 of 2 to protect any units or material stored on site. Temporary Fencing shall be required for Bid Package-02 where work directly impacts students for safety
- ITEM NO. 9 Question: The project manual states to have contractor for Bid Package 01 – HVAC to provide temporary restrooms facilities. These are typically provided by the General Contractor. Please clarify the need for the Mechanical contractor to provide temporary restrooms.
- Response: All Bidders
- Each bid package contractor shall be responsible for providing temporary restrooms for their own crew as restrooms on site shall not be available for use.



ITEM NO. 10 Question: General Conditions 00 70 00 Article 27 states that there may be a requirement for fingerprinting if applicable. Please clarify the need for fingerprinting.

Response: All Bidders

Fingerprinting requirement shall be required per Section 00 70 00 – General Conditions, Article 27 for both bid packages.

ITEM NO. 11 Question: At all sites, the General Demolition Note No. 1 calls for the removal of all ductwork, ductwork accessories, diffusers, grilles, HVAC systems insulation and supports, temperature control devices, HVAC equipment and specialties. Mechanical Demolition plans note to protect in place. Please clarify demolition scope.

Response: All Bidders

Bid Package Contractors shall follow the Mechanical Demolition Floor Plan notes per each Site and protect existing duct work and accessories in place during construction.

ITEM NO. 12 Question: At all sites where drywells are required, please provide clarification on which Bid Package Contractor is responsible for excavating the ground for the condensate lines.

Response: All Bidders

Bid Package Contractor-02 General shall be responsible for the entire installation of drywells with all associated work. Bid Package Contractor-01 HVAC shall stub out condensate lines from units only.

ITEM NO. 13 Question: At all sites, where applicable, there will be stucco removal required to properly install the curb and unit. Please clarify which bid package will be responsible for removing and replacing the stucco required.

Response: All Bidders

Bid Package Contractor – 02 General shall remove and replace stucco where required and coordinate extent of demo with Bid Package – 01 HVAC.

END OF ADDENDUM 02

SPLIT AIR CONDITIONER SCHEDULE			
UNIT SYMBOL	SAC-K1,K2		
MANUFACTURER	TOSHIBA CARRIER		
TYPE	HIGH WALL		
BUILDING	KINDERGARTEN		
INDOOR UNIT	MODEL	RAV-SM242K RTP-UL	
	LOCATION	CORRIDOR	
	BLOWER - CFM	706 / 530 / 353	
	COOLING	RATED CAPACITY - MBH	24.0
		EER2 / SEER2	11.8 / 22.7
	HEATING	RATED CAPACITY - MBH	34.0
		HSPF2	10.3
COP2 (47°F)	3.2		
DIMENSIONS (HxWxD) - IN	12.6 x 41.5 x 9.8		
WEIGHT - LBS	33		
OUTDOOR UNIT	MODEL	RAV-SP242AT2P-UL	
	LOCATION	ROOF	
	REFRIGERANT TYPE	R410A	
	MCA / MOCP	17.0 / 25.0	
	VOLTS / PHASE	208 / 1	
	DIMENSIONS (HxWxD) - IN	35 x 35 x 13	
	WEIGHT - LBS	141	
DETAIL REFERENCE	1,2,3/M0-2.2		
REMARKS	1,2,3		
REMARKS			
1- INDOOR UNIT POWERED FROM OUTDOOR UNIT.			
2- REFRIGERANT AND SUCTION LINES SHALL BE SIZED PER MANUFACTURER'S RECOMMENDATION BASED ON ACTUAL DISTANCE BETWEEN INDOOR AND OUTDOOR UNITS.			
3- PROVIDE WIRED THERMOSTAT.			

EVAPORATIVE COOLER SCHEDULE (MULTI-PURPOSE)	
UNIT SYMBOL	EC-M1
LOCATION	ROOF
SHEET REFERENCE	M2-1.1
MANUFACTURER	PHOENIX MANUFACTURING, INC.
MODEL	FD 650
TYPE	DOWN DISCHARGE
SERVICE	KITCHEN
FAN - CFM	4710
FAN MOTOR - HP	0.75
VOLTS - PHASE	120/240 - 1
OPERATING WEIGHT LBS	290
DETAIL REFERENCE	9/M0-2.1
REMARKS	
1- PROVIDE MANUFACTURER'S AUTOMATIC DRAIN PUMP KIT.	
2- ELECTRONICALLY TIED TO EXISTING EXHAUST FAN(S).	
3- PROVIDE FIRE MARSHAL APPROVED DUCT SMOKE DETECTOR FOR AIR MOVING SYSTEM SUPPLYING IN EXCESS OF 2000 CFM FOR AUTOMATIC SHUT OFF. IF BUILDING IS SERVED BY TOTAL COVERAGE SMOKE-DETECTION SYSTEM, AUTOMATIC UNIT SHUT OFF CAN BE ACCOMPLISHED BY INTERCONNECTION TO SUCH SYSTEM.	

EXISTING EVAPORATIVE COOLER AND NEW EVAPORATIVE COOLER COMPARISON SCHEDULE (MULTI-PURPOSE)			
UNIT SYMBOL	EC-M1		
MANUFACTURER	ADOBE AIR	PHOENIX	
CONDITION	EXISTING	NEW	
MODEL	UND65	FD 650	
DIMENSIONS (LxWxH) - IN	37 x 37 x 42	37 x 37 x 42.25	
UNIT WEIGHT - LBS	250	290	
CURB WEIGHT - LBS	N/A	N/A	
CURB ADAPTER WEIGHT - LBS	N/A	N/A	
ECONOMIZER WEIGHT - LBS	N/A	N/A	
TOTAL WEIGHT - LBS	250	290	

HEAT PUMP SCHEDULE (WALL MOUNTED)		
UNIT SYMBOL	HP-K1	
LOCATION	KINDERGATEN	
SHEET REFERENCE	M2-1.2	
MANUFACTURER	BAR	
MODEL	W48HY-A04DM4XXE	
TYPE	HEAT PUMP/ WALL MOUNTED	
SERVICE	SEE FLOOR PLANS	
BLOWER - CFM	1550	
EXTERNAL S.P. - "WG	0.03	
OUTSIDE AIR - CFM	450	
BLOWER MOTOR - HP	0.75	
COOLING	TOTAL CAPACITY - MBH	48.4
	SENSI. CAPACITY - MBH	37.8
	EAT - °F - DB	80.0
	EAT - °F - WB	67.0
	LAT - °F - DB	59.3
LAT - °F - WB	58.1	
AMBIENT AIR TEMP. - °F	95.0	
MIN. EER	11.0	
HEATING	ELECTRIC RESISTANCE HEAT - KW	4.0
	HEATING OUTPUT - MBH	42.5
	EAT - °F - DB	70.0
	LAT - °F - DB	82.2
	AMBIENT AIR TEMP. - °F	10.0
MIN. COP - %	3.3	
FILTER	SIZE W"xH"xL"	2 x 20 x 30
	QUANTITY	1
	TYPE	2" PLEATED MERV-11
VOLTS - PHASE	208/230 - 1	
MCA / MOCP	57 / 60	
OPERATING WEIGHT (LBS)	549	
DIMENSIONS (H"xW"xD")	84.88 x 42 x 25.52	
DETAIL REFERENCE	5/M0-2.1	
REMARKS	1,2,3,4,5	
REMARKS		
1- PROVIDE WITH MANUFACTURER'S ECONOMIZER PACKAGE.		
2- MATCH COLOR WITH BUILDING FINISH AND RECEIVE APPROVAL FROM OWNER/ARCHITECT PRIOR TO ORDERING.		
3- IT IS THE INTENT THAT THE EXISTING WALL OPENINGS (WHERE REPLACEMENT OF UNITS IS INDICATED) ARE ADEQUATE WITHOUT ENLARGEMENT. IF ANY INCREASE IN THE EXISTING OPENING IS REQUIRED, THE CONTRACTOR SHALL GET THE APPROVAL OF DSA/SEOR PRIOR TO PROCEEDING.		
4- ACCESSORY AND OPTION WEIGHTS ARE INCLUDED IN OPERATING WEIGHT.		
5- UNIT COMPLETE WITH CONDENSER COIL PROTECTION GRILLES FROM MANUFACTURER.		

EXISTING WALL MOUNTED HEAT PUMP AND NEW WALL MOUNTED HEAT PUMP COMPARISON SCHEDULE			
RELOCATABLE NUMBER	KINDERGARTEN BUILDING		
UNIT SYMBOL	HP-K1		
MANUFACTURER	BAR	BAR	
CONDITION	EXISTING	NEW	
MODEL	WH482	W48HY	
TYPE	ELECTRIC	ELECTRIC	
CFH INPUT	N/A	N/A	
DIMENSIONS (H"xW"xD") - IN	84.88 x 42.015 x 25.432	84.88 x 42 x 25.52	
UNIT WEIGHT - LBS	565	549	
TOTAL WEIGHT - LBS	565	549	

HEAT PUMP SCHEDULE (WALL MOUNTED)		
UNIT SYMBOL	HP-R1	
LOCATION	PRESCHOOL RELOCATABLE	
SHEET REFERENCE	M2-1.4	
MANUFACTURER	BAR	
MODEL	T48S1-A04DM4XXE	
TYPE	HEAT PUMP/ WALL MOUNTED	
SERVICE	SEE FLOOR PLANS	
BLOWER - CFM	1550	
EXTERNAL S.P. - "WG	0.03	
OUTSIDE AIR - CFM	450	
BLOWER MOTOR - HP	0.75	
COOLING	TOTAL CAPACITY - MBH	46.5
	SENSI. CAPACITY - MBH	36.0
	EAT - °F - DB	80.0
	EAT - °F - WB	67.0
	LAT - °F - DB	58.5
LAT - °F - WB	57.6	
AMBIENT AIR TEMP. - °F	95.0	
MIN. EER	11.0	
HEATING	ELECTRIC RESISTANCE HEAT - KW	4.0
	HEATING OUTPUT - MBH	43.0
	EAT - °F - DB	70.0
	LAT - °F - DB	83.9
	AMBIENT AIR TEMP. - °F	10.0
MIN. COP - %	2.3	
FILTER	SIZE W"xH"xL"	2 x 20 x 30
	QUANTITY	1
	TYPE	2" PLEATED MERV-11
VOLTS - PHASE	208/230 - 1	
MCA / MOCP	57 / 60	
OPERATING WEIGHT (LBS)	605	
DIMENSIONS (H"xW"xD")	93 x 42.075 x 22.432	
DETAIL REFERENCE	5/M0-2.1	
REMARKS	1,2,3,4,5	
REMARKS		
1- PROVIDE WITH MANUFACTURER'S ECONOMIZER PACKAGE.		
2- MATCH COLOR WITH BUILDING FINISH AND RECEIVE APPROVAL FROM OWNER/ARCHITECT PRIOR TO ORDERING.		
3- IT IS THE INTENT THAT THE EXISTING WALL OPENINGS (WHERE REPLACEMENT OF UNITS IS INDICATED) ARE ADEQUATE WITHOUT ENLARGEMENT. IF ANY INCREASE IN THE EXISTING OPENING IS REQUIRED, THE CONTRACTOR SHALL GET THE APPROVAL OF DSA/SEOR PRIOR TO PROCEEDING.		
4- ACCESSORY AND OPTION WEIGHTS ARE INCLUDED IN OPERATING WEIGHT.		
5- UNIT COMPLETE WITH CONDENSER COIL PROTECTION GRILLES FROM MANUFACTURER.		

EXISTING WALL MOUNTED HEAT PUMP AND NEW WALL MOUNTED HEAT PUMP COMPARISON SCHEDULE			
RELOCATABLE NUMBER	PRESCHOOL RELOCATABLE		
UNIT SYMBOL	HP-R1		
MANUFACTURER	BAR	BAR	
CONDITION	EXISTING	NEW	
MODEL	WH421	T48S1	
TYPE	ELECTRIC	ELECTRIC	
CFH INPUT	N/A	N/A	
DIMENSIONS (H"xW"xD") - IN	84.875 x 42.015 x 22.432	93 x 42.015 x 22.432	
UNIT WEIGHT - LBS	555	605	
TOTAL WEIGHT - LBS	555	605	



1920 E Warner Ave., Suite 3-H
Santa Ana, CA 92705
Telephone (714) 884-3834
Fax (714) 884-3834
PEI #600.030

**DISCOVERY
ELEMENTARY
SCHOOL
VICTOR
ELEMENTARY
SCHOOL DISTRICT**
13247 AMETHYST RD.
VICTORVILLE, CA 92392

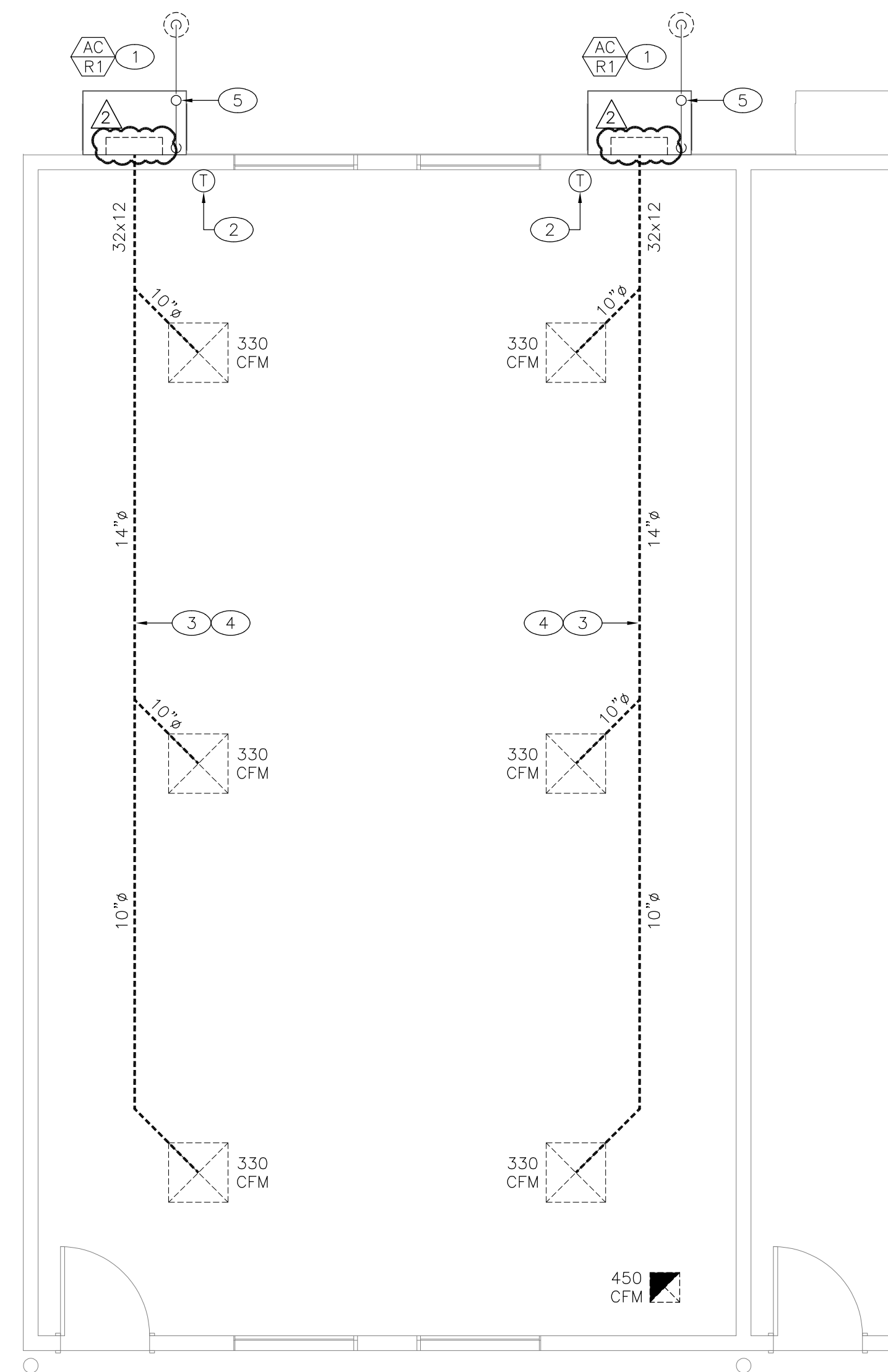
ISSUED FOR:

REVISIONS:

2	Add. 02 - Constructability Review Revisions	11/10/2023
---	---	------------

PLAN NOTES

- 1.- WALL MOUNTED GAS-ELECTRIC AIR CONDITIONING UNIT COMPLETE WITH SOUND CURB. RECONNECT TO EXISTING MODIFIED SUPPLY AIR DUCTWORK LOCATED ABOVE UNIT. RECONNECT TO EXISTING MODIFIED RETURN AIR DUCTWORK IN WALL. THE NEW BARD UNIT IS SHORTER IN LENGTH (BY 2") THAN THE EXISTING UNIT. AFTER INSTALLATION OF THE REPLACEMENT UNIT, PATCH, REPAIR AND PAINT THE AREA OF REMOVAL OF THE OLDER UNIT INCLUDING THE ANCHOR HOLES TO MATCH THE SURROUND WALL SURFACE TO THE SATISFACTION OF THE OWNER. SEE SCHEDULE ON SHEET M0-1.2, DETAIL 5/MD-2.1 AND GENERAL NOTE ON THIS SHEET FOR ADDITIONAL INFORMATION. RECONNECT LINE SIZE GAS (SCH. 40 BLACK STEEL) COMPLETE WITH A LISTED YELLOW FLEXIBLE CONNECTOR, S.O.C., UNION AND 6" DIRT LEG.
- 2.- DIGITAL THERMOSTAT WITH CO2 SENSOR WITH DIGITAL DISPLAY, 2-HOUR OVERRIDE BUTTON AND CO2 ADJUSTMENT BUTTON. FOR MOUNTING HEIGHT SEE SHEET M0-1.0. COORDINATE LOCATION OF THERMOSTAT WITH ROOM FURNITURE AND ARCHITECT PRIOR TO INSTALLATION.
- 3.- CLEAN ALL EXISTING AIR DISTRIBUTION SYSTEM INCLUDING DUCTWORK, GRILLES, DIFFUSERS AND ASSOCIATED ACCESSORIES IN THEIR ENTIRETY IN EACH SPACE PER REQUIREMENTS OF SPECIFICATION SECTION 23 01 30.
- 4.- PERFORM A TEST AND BALANCE OF EACH SPACE. BALANCE EACH DIFFUSER/GRILLE TO THE SAME CFM AS MEASURED PRIOR TO DEMOLITION WORK. SEE AIR BALANCE NOTE ON DEMOLITION FLOOR PLAN. SUBMIT TEST AND BALANCE REPORT INCLUDING COMPARISON WITH THE PRE-DEMOLITION VALUES.
- 5.- FOR CLASSROOM RELOCATABLES 1, 2, 3 AND 4:
3/4" CD (COPPER TYPE 'M') FROM OUTDOOR A/C UNIT DN. TO BEL. GRADE AND DISCHARGE INTO DRYWELL. PATCH GRADE TO MATCH EXISTING. SEE DETAIL 3/MD-2.1 FOR ADDITIONAL INFORMATION.
FOR CLASSROOM RELOCATABLE 21:
3/4" CD (COPPER TYPE 'M') FROM OUTDOOR A/C UNIT, EXTEND ON FACE OF WALL THRU ADJACENT WALL GAP AND TERMINATE WITH A 90° ELBOW AT +6" ABV. GRADE.
FOR THE REST OF THE CLASSROOM RELOCATABLES:
3/4" CD (COPPER TYPE 'M') FROM OUTDOOR A/C UNIT DN. FACE OF WALL AND TERMINATE WITH A 90° ELBOW AT +6" ABV. GRADE.



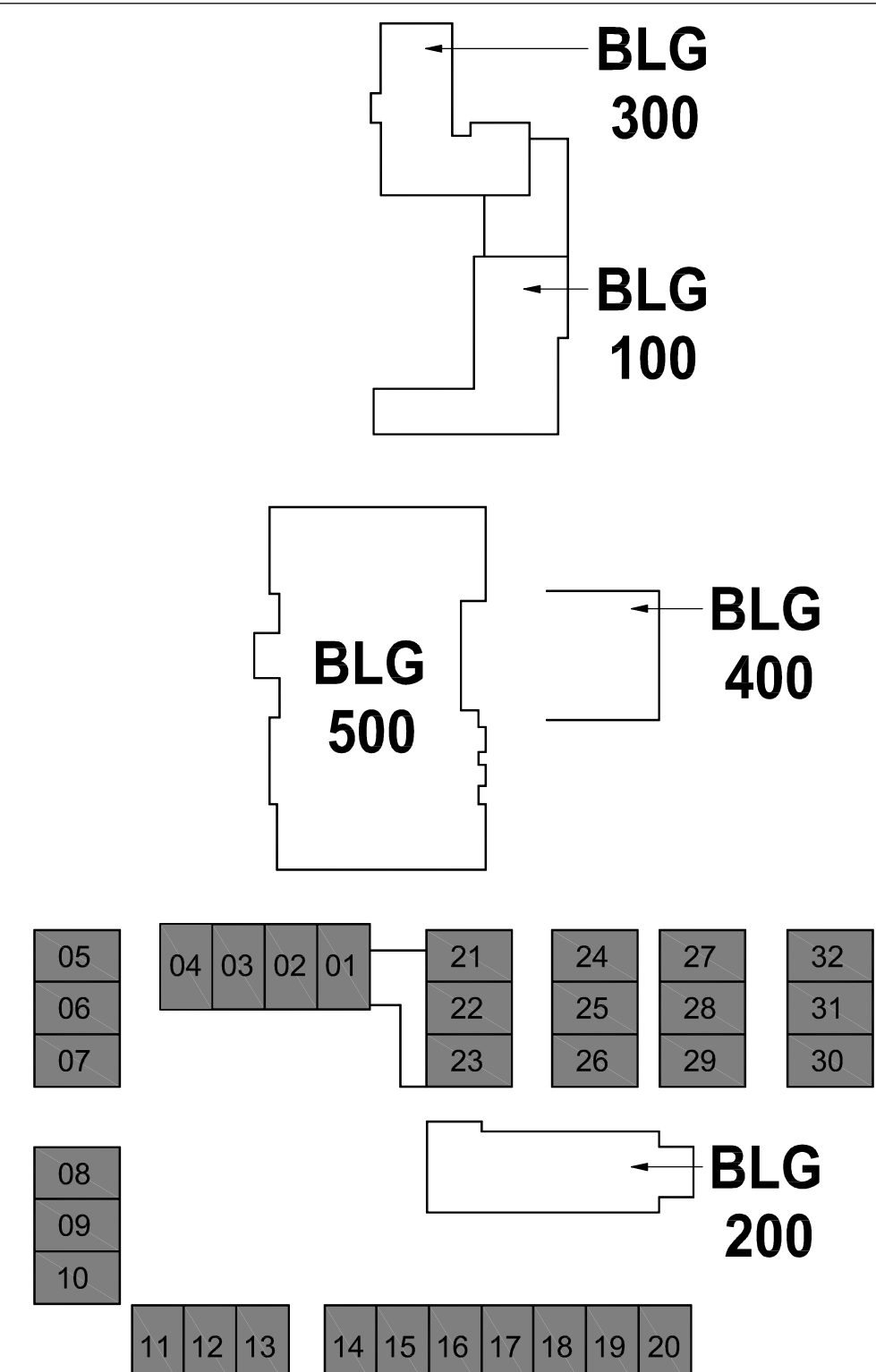
SPECIAL NOTE

CARBON MONOXIDE DETECTION SYSTEM IS NOT REQUIRED FOR GROUP "E" BUILDINGS THAT ARE CONSTRUCTED BEFORE ADOPTION OF THE 2016 CALIFORNIA BUILDING STANDARDS CODE PER DSA IR 9-2 2.2.1.2.

GENERAL NOTE

- 1.- LAYOUT SHOWN ON THIS SHEET IS TYPICAL FOR ALL RELOCATABLE BUILDINGS. FOR THE ACTUAL UNIT TAG, MODEL AND SIZE FOR EACH RELOCATABLE BUILDING, REFER TO SHEET M1-1.1 AND UNIT SCHEDULE ON SHEET M0-1.2.

KEY PLAN



MECHANICAL RENOVATION FLOOR PLAN - RELOCATABLE (DUAL UNIT)

1
1/4" = 1'-0"

WD PROJ. # 22825 | DRAWN BY: | CHECKED: | DATE 07/18/23

© WESTGROUP DESIGNS, INC.

